

LAND CERTIFICATE NO. 32134 COPY

Land Certificate No. 32134 Tulcea

A. Part I. Property description LAND

within the built-up area

Address: Loc. Tulcea, Str PACII, Nr. 20, Jud. Tulcea

Item no.	Cadastral number Topographic number	Surface* (sqm)	Observations / References
A1	32134	490	

Constructions

Item	Cadastral number Topographic number	Address	Observations / References
A1.1	32134-C1	Loc. Tulcea, Str PACII, Nr. 20, Jud. Tulcea	No. of floors: 3; Surface built on the ground: 376 sqm; TOWN HALL HEADQUARTERS,

B. Part II. Owners and documents

Entries regarding property rights and other real rights		References
22282 / 16/06/2010		
Administrative Act no. DECISION NO. 83, dated 30/03/2010 issued by the Local Council of the Municipality of Tulcea (administrative act no. 133/30-10-2008 issued by the Local Council of the Municipality of Tulcea, annex no. 4 to H.C.L. (Decision of the Local Council) no. 133 of 30.10.2008 - position no. 918);		
B1	Tabulation, PUBLIC PROPERTY right, acquired by law, current share 1/1, initial share 1/1	A1, A1.1
1) TULCEA MUNICIPALITY, public domain		

C. Part III. ENCUMBRANCES.

Entries regarding dismemberment of property rights, real rights of guarantee and encumbrances	References
NOT EXISTING	

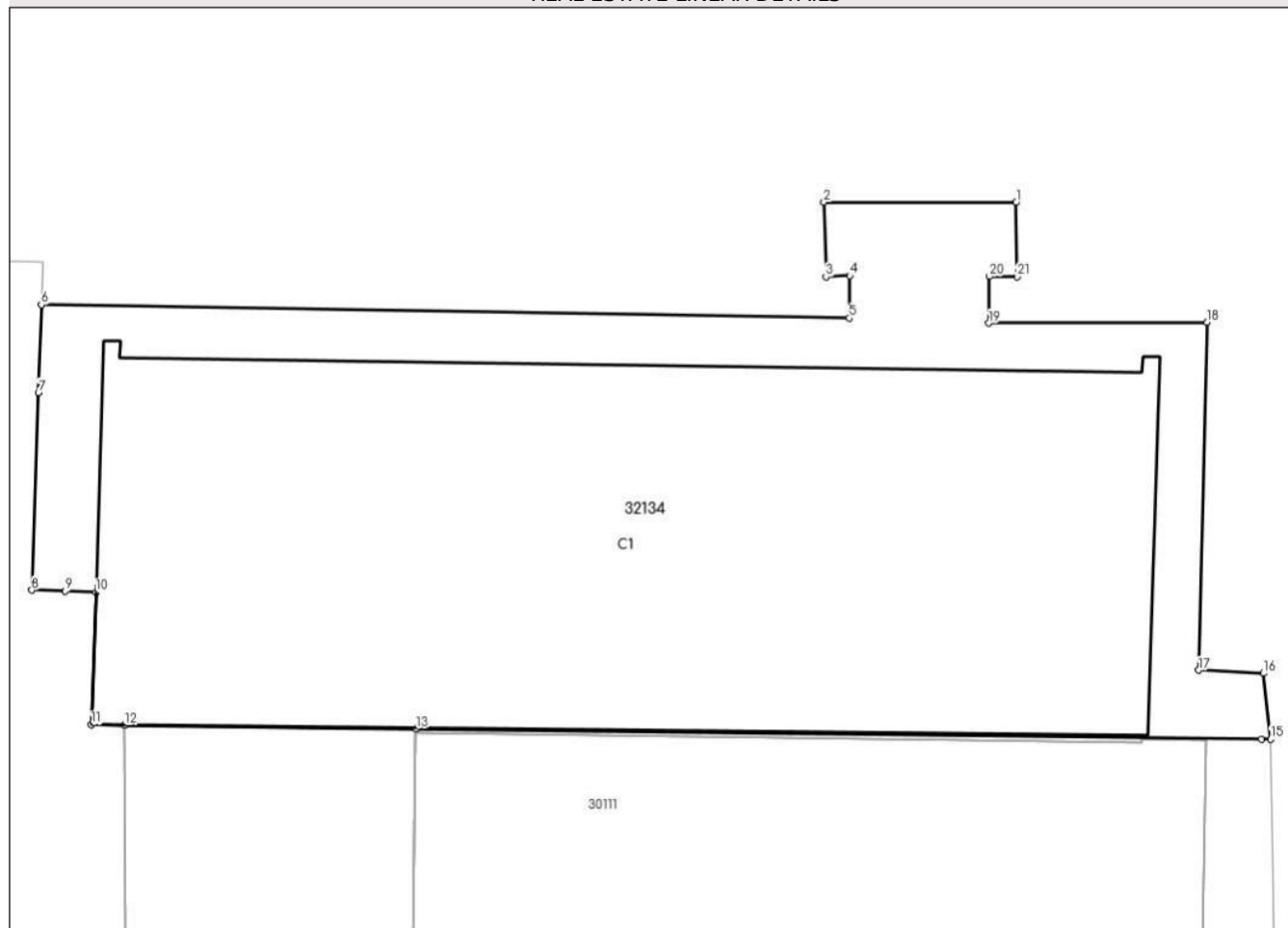
Annex No. 1 To Part I

Land

Cadastral no.	Surface (sqm)*	Observations / References
32134	490	...

* The surface is determined in the Stereo 70 projection plane.

REAL ESTATE LINEAR DETAILS



Land related data

Item no.	Usage category	Land within the built-up area	Surface (sqm)	Strip land	Lot	Topographical no.	Observations / References
1	construction yards	YES	490	-	1	-	

Construction data

Item	Number	Construction destination	Surface (sqm)	Legal situation	Observations / References
A1.1	32134-C1	administrative and social cultural buildings	From the documents: 363 Measured: 376	With documents	No. of floors: 3; Surface built on the ground: 376 sqm; TOWN HALL HEADQUARTERS,

Segments length

1) The segment length values are obtained from the plan projection.

Start point	End point	Segment length (** (m))
1	2	5.99
3	4	0,744
5	6	25,217

Start point	End point	Segment length (** (m))
2	3	2,331
4	5	1,323
6	7	2.74

Start point	End point	Segment length (** (m)
7	8	6.17
9	10	0,961
11	12	1,038
13	14	26,391
15	16	2,075
17	18	10,862
19	20	1,457
21	1	2.32

Start point	End point	Segment length (** (m)
8	9	1,039
10	11	4,132
12	13	9,096
14	15	0,292
16	17	2,023
18	19	6,817
20	21	0,858

** Segment lengths are determined in the Stereo 70 projection plane and are rounded to 1 millimeter.

*** The distance between the points is made up of cumulative segments that are smaller than the value of 1 millimeter.